

**Chemung County Stormwater
Construction Inspection
Erosion and Sediment Control**



Project Name Horseheads Hotel	Date 11-15-19
Location State Route 14 Horseheads (V), NY	Permit # NYR10Y122
Weather Conditions sunny, cold	Entry Time: 10:35 am
On-Site Representative Present: Mike Bezon	Exit Time: 10:55 am

Construction Site Notes:	
	-All grading of parking areas is being done.
	-Sidewalks are being poured.

Yes	No	N/A		
	X		All erosion and sediment control measures installed/constructed	
X			All erosion and sediment control measures maintained properly	
	X		Are there currently more than 5 acres disturbed w/o prior approval	
	X		Have stabilization measures been initiated in inactive areas	
X			Are permanent stormwater control measures being implemented	
	X		Was there a discharge into the receiving water on the day of inspection	
	X		Evidence of turbidity or oil in the receiving waters	
X			Are weekly inspections being performed?	
X			Are the inspections being performed by a qualified individual?	

Corrections Needed:	
-Concrete washout needs to be installed. Sidewalks have been poured and washing near the dumpster is not acceptable.	
-Construction entrance needs to be installed. More traffic is utilizing the graded future parking lot and is tracking sediment off site.	
-Drop inlet/catch basin protection is required on all drainage structures.	

Satisfactory Marginal X Unsatisfactory

Date 11/15/19	Inspector Jessica Varricchio
----------------------	-------------------------------------



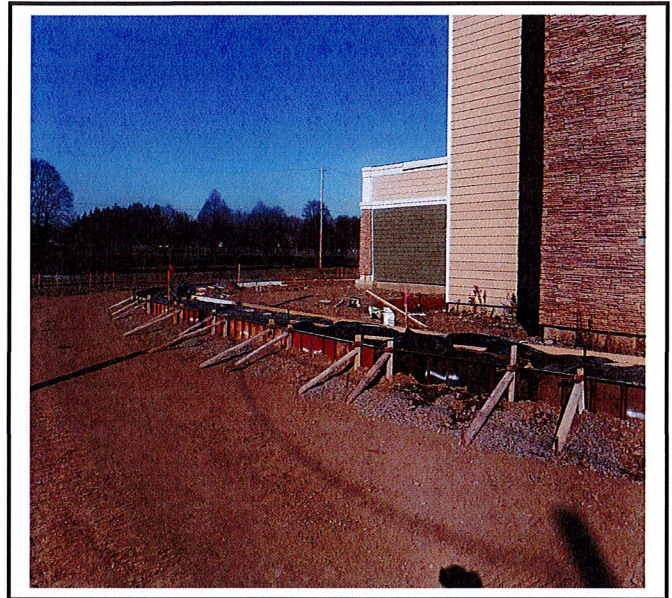
COUNTY OF CHEMUNG
Chemung County Stormwater Coalition
851 Chemung Street
Horseheads, New York 14825
Ph. 607.796.2216

PROJECT: Horseheads Hotel
Village of Horseheads
Municipal Construction Inspection
November 15, 2019

BY: Jessica Verrigni, CPESC, CPSWQ



Construction entrance needed at first location off pavement. Too much sediment is getting tracked off site.



Concrete washout is required. Sidewalks have been poured and there is no washout at this time.



Catch basin grate is required for safety but inlet protection is required to prevent sediment and debris from getting into stormwater basin.



Drop inlet protection required.