

**Chemung County Stormwater
Construction Inspection
Erosion and Sediment Control**



Project Name Byrne Dairy	Date 8/13/2021
Location Pennsylvania Ave Elmira, NY	Permit # NYR111426
Weather Conditions sunny, warm	Entry Time: 9:34 am
On-Site Representative Present: none	Exit Time: 9:51 am

Construction Site Notes:	
	-Building is currently under construction.
	-Stormwater infrastructure has been installed with the exception of the drainage swale along the east side of building.

Yes	No	N/A	
	X		All erosion and sediment control measures installed/constructed
		X	All erosion and sediment control measures maintained properly
	X		Are there currently more than 5 acres disturbed w/o prior approval
	X		Have stabilization measures been initiated in inactive areas
X			Are permanent stormwater control measures being implemented
	X		Was there a discharge into the receiving water on the day of inspection
	X		Evidence of turbidity or oil in the receiving waters
?			Are weekly inspections being performed?
?			Are the inspections being performed by a qualified individual?

Corrections Needed:
-Approximately 8 of the 13 drainage structures (DW & CB) don't have inlet protection. This makes them susceptible to sediment. Inlet protection is required. Many of these structures are in drive zones and alternative practices should be considered.
-Stormwater Quality Unit has not had the grates placed on top of them and debris can get down into structure.
-Qualified Inspections- it does not appear inspections are being conducted on a consistent basis. Most recent inspection is from July. Report was unsigned so unsure whether person is qualified.

Satisfactory	Marginal	Unsatisfactory	X
Date 8/13/21	Inspector <i>Jessica Cerrugni</i>		



COUNTY OF CHEMUNG
Chemung County Stormwater Coalition
851 Chemung Street
Horseheads, New York 14845
Ph. 607.796.2216

PROJECT: Byrne Dairy
City of Elmira
Municipal Construction Inspection
August 13, 2021

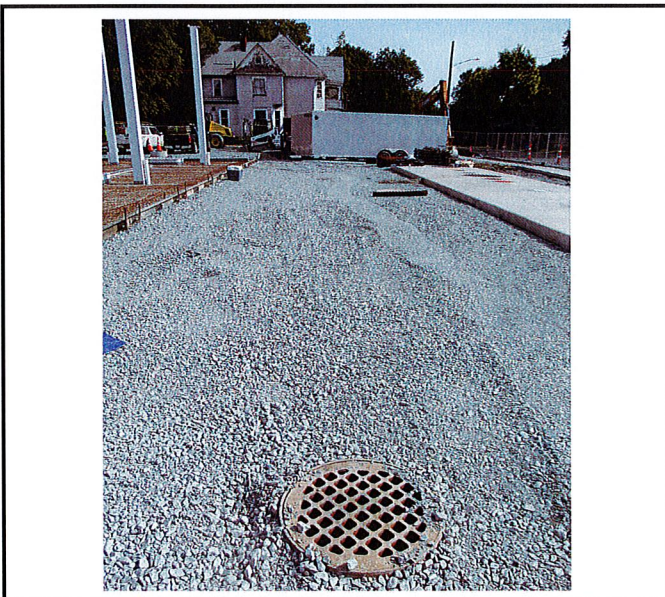
BY: Jessica Verrigni, CPESC, CPSWQ



Infiltration Basin under construction.



DW-5 no inlet protection installed.



Drop inlet protection is not installed on the majority of the catch basins. Protection is required.



Stormwater pretreatment device- the lids are not placed on them and material can get down into them.