

**Chemung County Stormwater  
Construction Inspection  
Erosion and Sediment Control**



<b>Project Name</b> CDS Monarch Senior Living Facility	<b>Date</b> 1-9-19
<b>Location</b> Maple Ave. City of Elmira	<b>Permit #</b> NYR11C547
<b>Weather Conditions</b> Overcast cold	<b>Entry Time:</b> 2:20 pm
<b>On-Site Representative Present:</b>	<b>Exit Time:</b> 2:35 pm

Construction Site Notes:

-No active construction at this time

-Owner would like to establish winter shutdown to reduce inspection frequen

Yes	No	N/A	
		X	All erosion and sediment control measures installed/constructed
		X	All erosion and sediment control measures maintained properly
		X	Are there currently more than 5 acres disturbed w/o prior approval
X			Have stabilization measures been initiated in inactive areas
X			Are permanent stormwater control measures being implemented
	X		Was there a discharge into the receiving water on the day of inspection
	X		Evidence of turbidity or oil in the receiving waters
X			Are weekly inspections being performed?
X			Are the inspections being performed by a qualified individual?

Corrections Needed: 1. Surface runoff from the parking area is causing major erosion to occur into the forebay. It is happening off the front lawn area as well.

2. Erosion control blanket not installed correctly. It is not toed in and does not overlap consistantly around the sits.

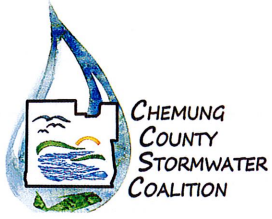
3. Compost socks have been removed but the mulch was left in place and not raked out.

4. Stone berms between the two forebays are not installed correctly.

5. Surface runoff from back sidewalks is also causing erosion down to the catch basins.

Satisfactory                      Marginal                      X                      Unsatisfactory

<b>Date</b> 1-9-19	<b>Inspector</b> <i>Jessica Verigin</i>
--------------------	---



COUNTY OF CHEMUNG  
Chemung County Stormwater Coalition  
851 Chemung Street  
Horseheads, New York 14825  
Ph. 607.796.2216

PROJECT: CDS Monarch Senior Living  
City of Elmira  
Municipal Construction Inspection  
January 9, 2019

BY: Jessica Verrigni, CPESC, CPSWQ



Erosion occurring from surface runoff from parking lot.



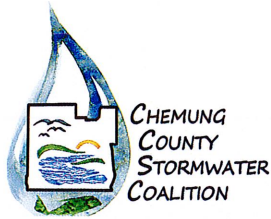
Erosion control blanket not correctly installed. It appears the compost sock was cut open and the blanket was tucked under that.



All bare soil has been covered but there is major erosion still occurring.



Erosion is occurring from surface runoff off from the parking lot.



COUNTY OF CHEMUNG  
Chemung County Stormwater Coalition  
851 Chemung Street  
Horseheads, New York 14825  
Ph. 607.796.2216

PROJECT: CDS Monarch Senior Living  
City of Elmira  
Municipal Construction Inspection  
January 9, 2019

BY: Jessica Verrigni, CPESC, CPSWQ



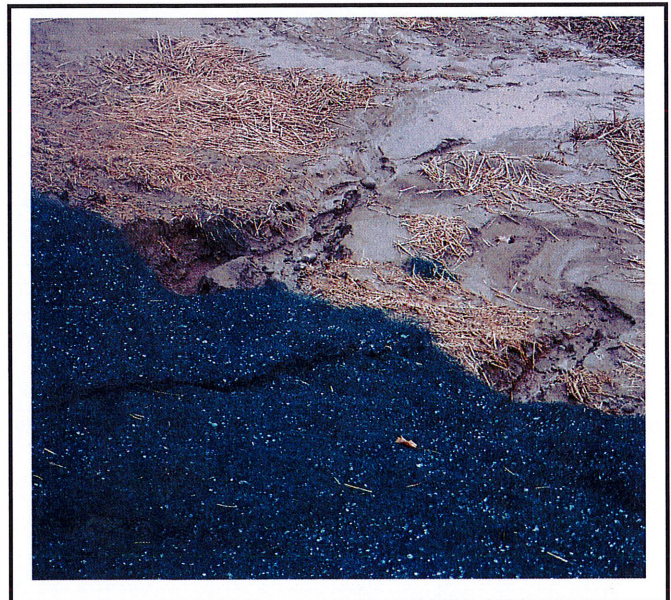
Erosion from front lawn is occurring from surface runoff.



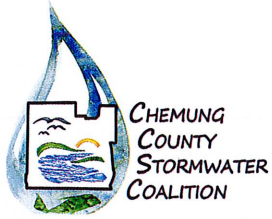
Rock berm is not installed correctly. Water can get around the berm in this section.



Blankets not installed correctly.



Sediment from erosion deposited into the bottom of forebay.



**COUNTY OF CHEMUNG**  
Chemung County Stormwater Coalition  
851 Chemung Street  
Horseheads, New York 14825  
Ph. 607.796.2216

**PROJECT:** CDS Monarch Senior Living  
City of Elmira  
Municipal Construction Inspection  
January 9, 2019

**BY:** Jessica Verrigni, CPESC, CPSWQ



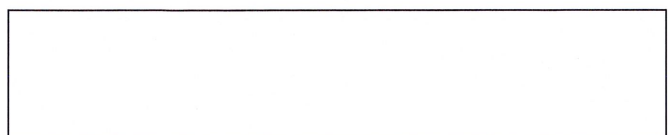
All open soil has been covered with blankets or mulch.

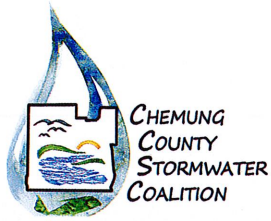


Inlet protection has been removed around catch basins.



Erosion occurring off back sidewalks down to catch basin.



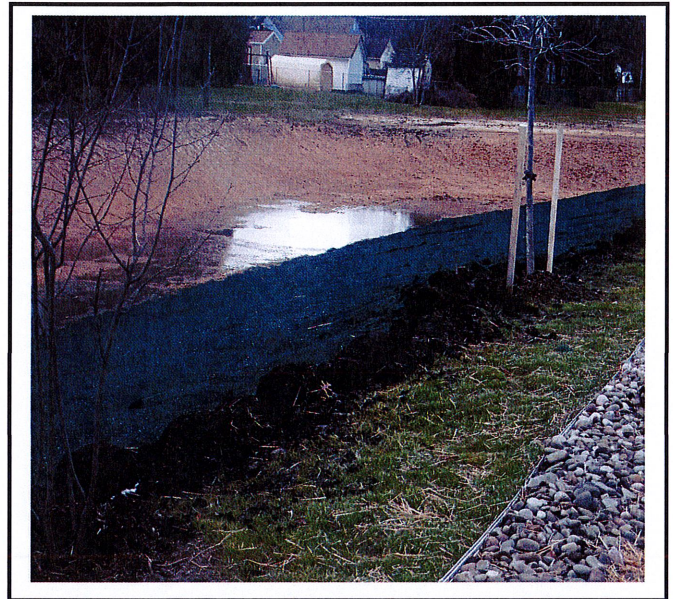


COUNTY OF CHEMUNG  
Chemung County Stormwater Coalition  
851 Chemung Street  
Horseheads, New York 14825  
Ph. 607.796.2216

<b>PROJECT:</b>	CDS Monarch Senior Living City of Elmira Municipal Construction Inspection January 9, 2019
<b>BY:</b>	Jessica Verrigni, CPESC, CPSWQ



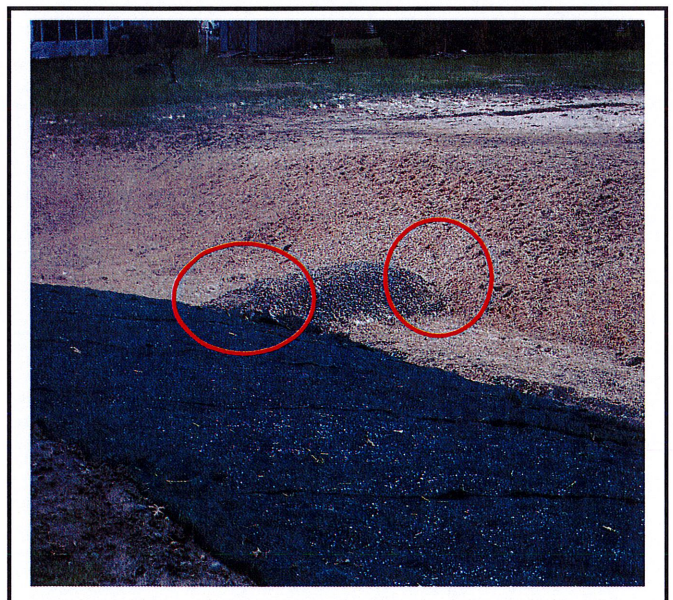
Compost sock removed but mulch not removed or raked flat.



Compost sock removed but mulch not removed or raked flat. Water is supposed to sheet flow of the rock diaphragm into the basin- mulch prevents this.



Erosion occurring off area near dumpster. This will eventually get under the blanket and cause sediment building up in basin.



Rock berm not constructed correctly.