

**Chemung County Stormwater  
Construction Inspection  
Erosion and Sediment Control**



<b>Project Name</b> Dollar General	<b>Date</b> 11-14-19
<b>Location</b> Old Ithaca Road Horseheads (T), NY	<b>Permit #</b> NYR11F379
<b>Weather Conditions</b> overcast, cold	<b>Entry Time:</b> 11:39 am
<b>On-Site Representative Present:</b> none	<b>Exit Time:</b> 11:48 am

Construction Site Notes:	
	-Store construction is completed.
	-No work is being done at the site.

Yes	No	N/A		
		<b>X</b>	All erosion and sediment control measures installed/constructed	
		<b>X</b>	All erosion and sediment control measures maintained properly	
	<b>X</b>		Are there currently more than 5 acres disturbed w/o prior approval	
<b>X</b>			Have stabilization measures been initiated in inactive areas	
<b>X</b>			Are permanent stormwater control measures being implemented	
	<b>X</b>		Was there a discharge into the receiving water on the day of inspection	
	<b>X</b>		Evidence of turbidity or oil in the receiving waters	
<b>X</b>			Are weekly inspections being performed?	
<b>X</b>			Are the inspections being performed by a qualified individual?	

Corrections Needed:
Stormwater Infiltration Basin (large one)- There is side slope slumping, erosion or the sod has not been applied correctly. This will cause major issues if not corrected. See photos.

Satisfactory                      x                      Marginal                      Unsatisfactory

<b>Date</b> 11/14/19	<b>Inspector</b> <i>Jessica Verrigni</i>
----------------------	--



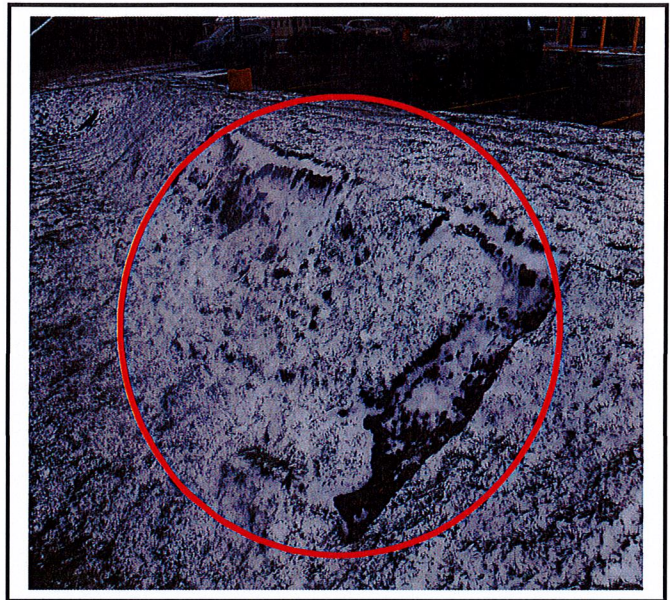
COUNTY OF CHEMUNG  
Chemung County Stormwater Coalition  
851 Chemung Street  
Horseheads, New York 14825  
Ph. 607.796.2216

**PROJECT:** Dollar General Old Ithaca Road  
Town of Horseheads  
Municipal Construction Inspection  
November 14, 2019

**BY:** Jessica Verrigni, CPESC, CPSWQ



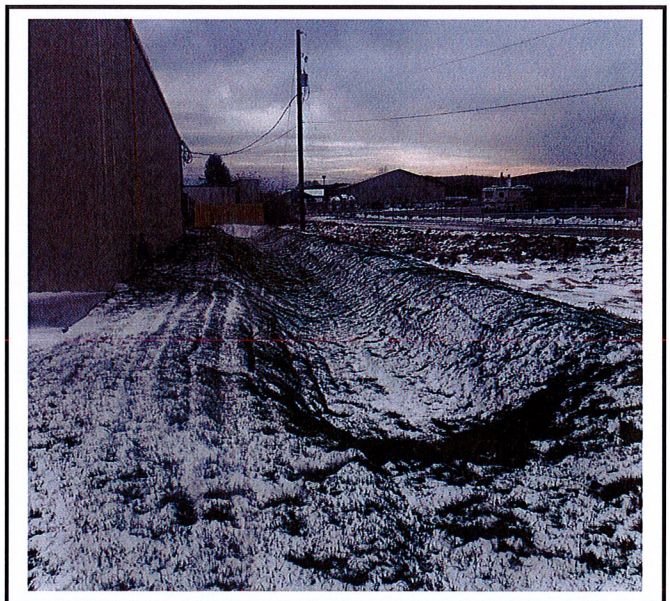
Infiltration basin has been completed and sod placed for stabilization.



There is an issue with the slope sliding or the sod is not attached correctly in the infiltration basin.



Inlet into the infiltration basin.



Rear stormwater basin is complete and has been sodded for stabilization.