





COUNTY OF CHEMUNG  
Chemung County Stormwater Coalition  
851 Chemung Street  
Horseheads, New York 14825  
Ph. 607.796.2216

PROJECT: UHaul  
Town of Horseheads  
Municipal Inspection  
November 1, 2017

BY: Jessica Verrigni, CPESC, CPSWQ



Seed application rate appears insufficient and not to the recommended application rate.



Rock check dam not installed correctly. It is diverting water away from intended conveyance area. Mulch already showing signs of being washed away.



Check dam not installed correctly.



Bioretention emergency spillway not grouted.



**COUNTY OF CHEMUNG**  
**Chemung County Stormwater Coalition**  
851 Chemung Street  
Horseheads, New York 14825  
Ph. 607.796.2216

**PROJECT:** UHaul  
Town of Horseheads  
Municipal Inspection  
November 1, 2017

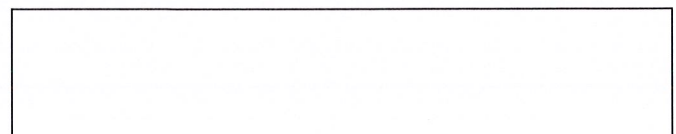
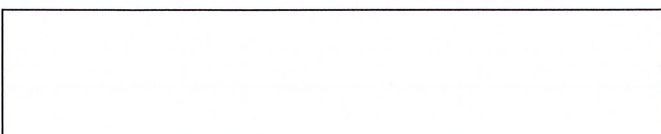
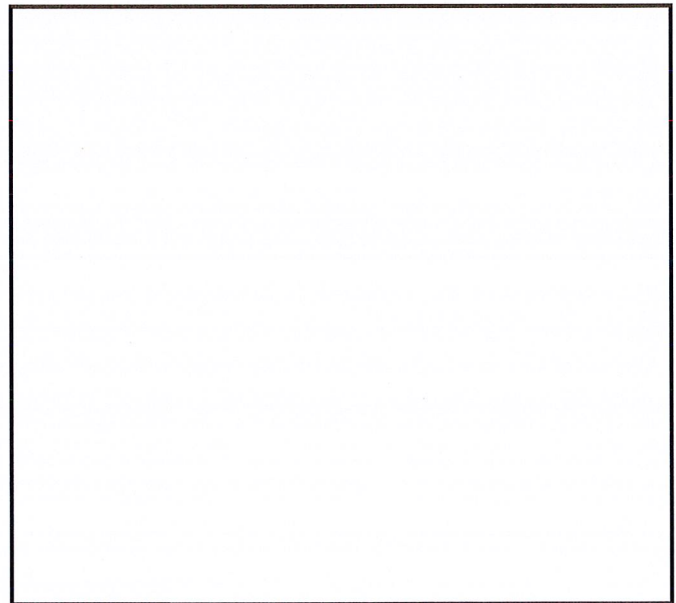
**BY:** Jessica Verrigni, CPESC, CPSWQ



Remove sediment blocking insert from DB 3.2 and any other drainage structure that they were used in.



Drainage swale behind building b does not appear to be graded in accordance with the plan. Also, no erosion control blanket was installed.



**DRAINAGE SCHEDULE (DB)**

STRUCTURE DESIGNATIONS		FROM	TO	DIA. (IN)	PIPE MAT'L	LENGTH (FT)	SLOPE (%)
C.O.	DB-5	DB-4					
TR=	903.70						
INV=	900.81	900.09	10	PVC	180	0.40%	
30x30 CB	DB-4	DB-3					
TG=	903.30						
INV=	900.09	899.17	15	HDPE	92	1.00%	
MH 4	DB-3	DB-3.2					
TR=	904.00						
INV=	901.01	900.49	18	HDPE	173	0.30%	
MH 4	DB-3.2	DB-3.1					
TR=	904.00						
INV=	900.49	900.02	18	HDPE	157	0.30%	
MH 4	DB-3.1	DB-3					
TR=	903.00						
INV=	900.02	900.00	18	HDPE	6	0.30%	
30x30 CB	DB-3	DB-2					
TR=	903.30						
INV=	899.17	899.10	15	HDPE	6.6	1.00%	
UG PT #1	DB-2	DB-1					
TR=	903.40						
INV=	898.60	898.60	24	HDPE	6	0.00%	
CS #1	DB-1	DB					
TR=	903.40						
INV=	898.60	898.50	12	PVC	22	0.45%	
ES	DB						
INV=	898.50						

**NOTES**

- REFER TO SHEET C1.0 F
- REFER TO SHEET C1.0 F

**DRAINAGE SCHEDULE (DA)**

STRUCTURE DESIGNATIONS		FROM	TO	DIA. (IN)	PIPE MAT'L	LENGTH (FT)	SLOPE (%)
30x30CB	DA-6	DA-5					
TG=	903.30						
INV=	899.97	899.47	15	HDPE	67	0.75%	
30x30CB	DA-5	DA-4					
TG=	903.80						
INV=	899.47	899.05	15	HDPE	56	0.75%	
RI-DA-4	RL	DA-4					
TR=	905.20						
INV=	899.60	899.05	6	PVC	55	1.00%	
30x30CB	DA-4	DA-3					
TG=	904.80						
INV=	899.05	898.77	15	HDPE	38	0.75%	
30x30CB	DA-3A	DA-3					
TG=	905.00						
INV=	901.18	900.70	12	HDPE	48	1.00%	
MH 4	DA-3	DA-2					
TR=	905.60						
INV=	898.77	898.71	15	HDPE	7.5	0.75%	
UG PT #2	DA-2	DA-1					
TR=	905.60						
INV=	898.71	898.71	36	HDPE	8	0.00%	
CS #2	DA-1	DA					
TG=	906.00						
INV=	898.21	898.00	12	PVC	75	0.28%	
ES	DA						
INV=	898.00						

**DRAINAGE SCHEDULE (D)**

STRUCTURE DESIGNATIONS		FROM	TO	DIA. (IN)	PIPE MAT'L	LENGTH (FT)	SLOPE (%)
BCS	D-3	D-2					
TG=	896.90						
INV=	892.58	892.58	12	HDPE	67	0.00%	
BCS	D-2	D-1					
TG=	896.90						
INV=	892.58	892.58	12	HDPE	56	0.00%	
BCS	D-1	D					
TG=	896.90						
INV=	892.58	892.50	12	HDPE	38	0.22%	
ES	D						
INV=	892.50						

**STRUCTURE TYPES**

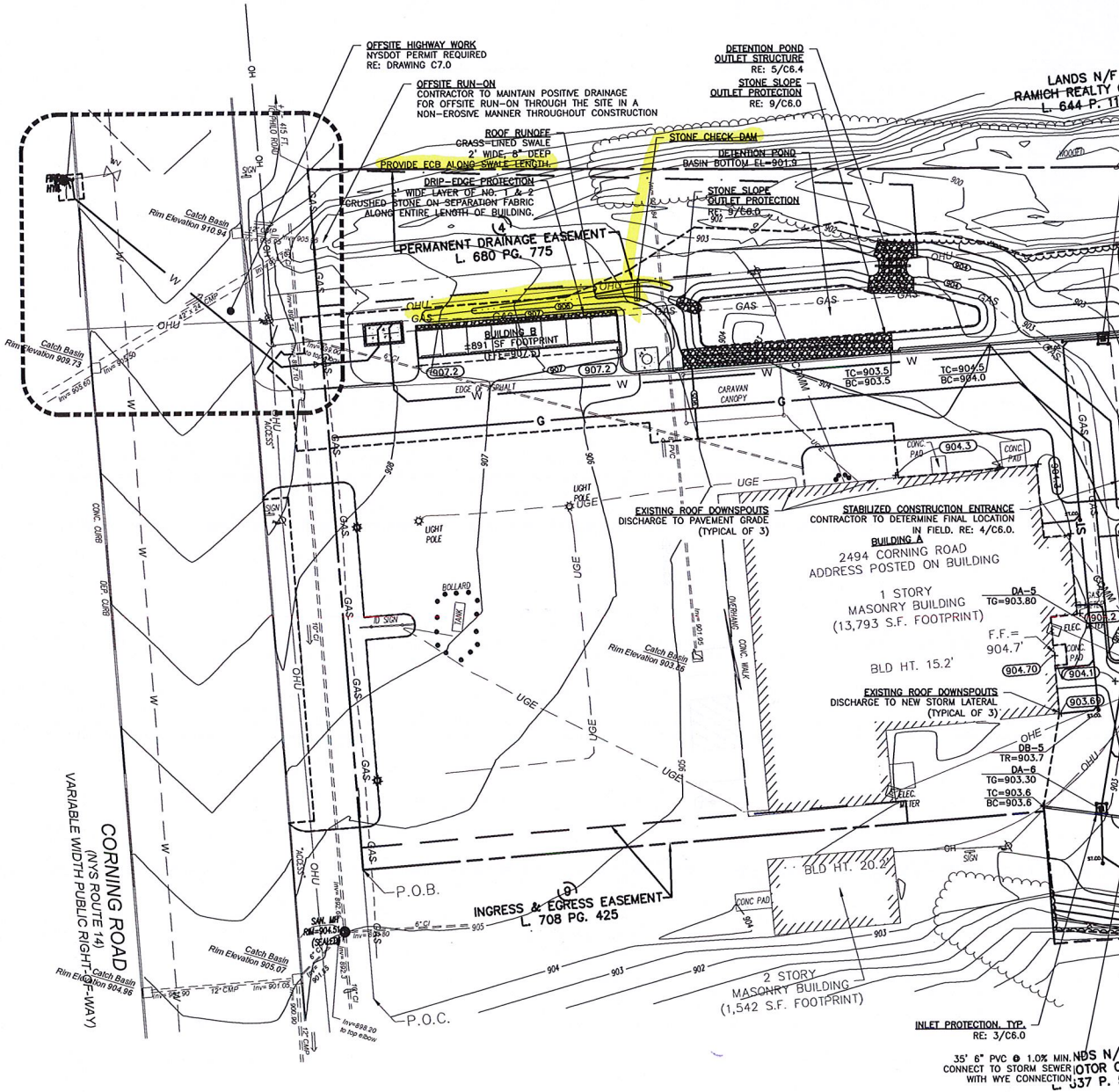
- BCS=BIORETENTION CONTROL STRUCTURE, RE: DETAIL
- ES=END SECTION
- INMH 4= 4' DIA. INLET MANHOLE
- MH 4= 4' DIA. MANHOLE
- C.O. = CLEAN OUT
- 24x24 CB= 24" x 24" CATCH BASIN
- 30x30 CB= 30" x 30" CATCH BASIN

**PIPE MATERIALS**

- HDPE=HIGH DENSITY POLYETHYLENE
- PVC=POLY-VINYL CHLORIDED PIPE

**DRAINAGE SCHEDULE (DC)**

STRUCTURE DESIGNATIONS		FROM	TO	DIA. (IN)	PIPE MAT'L	LENGTH (FT)	SLOPE (%)
24x24 CB	DC-1	DC					
TG	900.00						
INV=	894.75	894.75	10	PVC	50	0.00%	
ES	DC						
INV=	894.75						



INLET PROTECTION, TYP. RE: 3/C6.0  
 35' 6" PVC @ 1.0% MIN. NBS N/ CONNECT TO STORM W/ATOR C WITH WYE CONNECTION L. 337 P. !